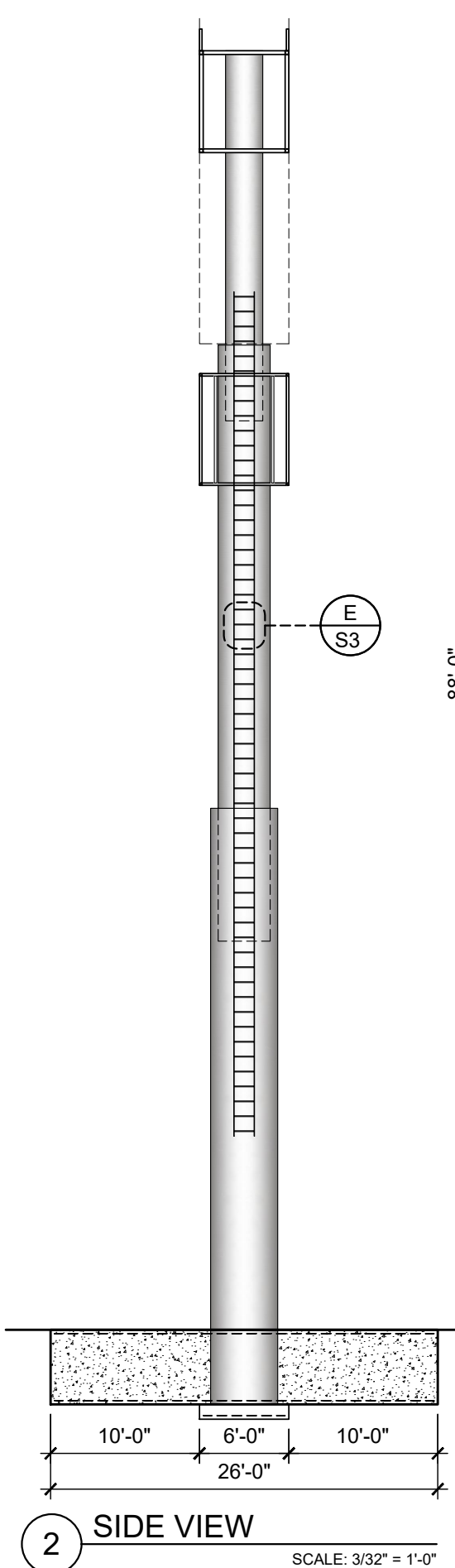
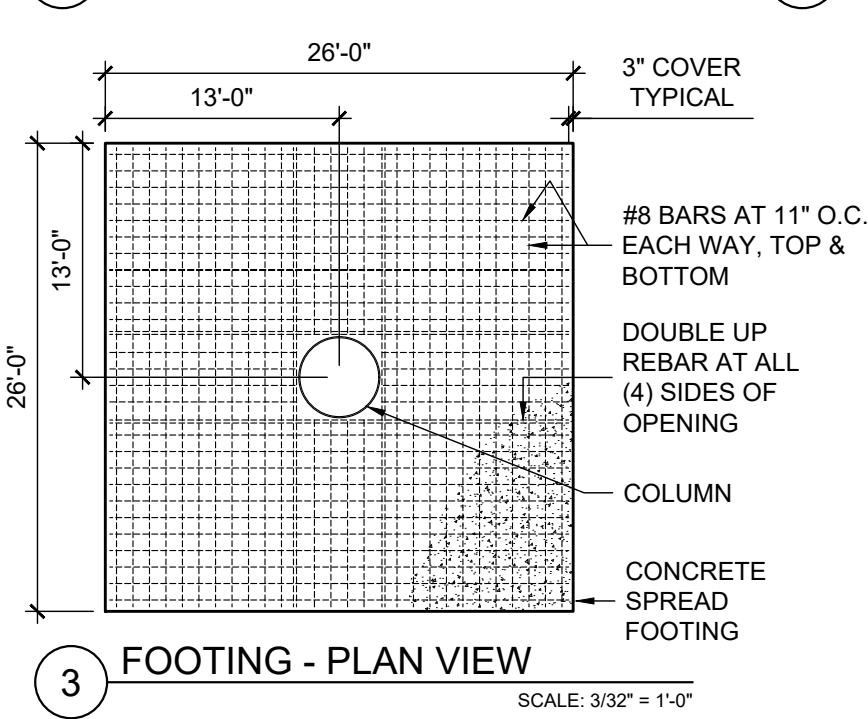


HSS 2x2x1/8 CANTILEVER BACKGROUND SUPPORT
HSS 3x3x3/16 WIND TRUSS
HSS 2x2x1/8 CANTILEVER BACKGROUND SUPPORT
HSS 2x2x1/8 @ 2'-6" O.C.
PRICE CHANGER SIGN BY SUNSHINE. SUNSHINE SHALL PROVIDE SHOP DRAWING TO YESCO ENGINEER FOR REVIEW AND APPROVAL.



2 SIDE VIEW
SCALE: 3/32" = 1'-0"

1 ELEVATION
SCALE: 3/32" = 1'-0"



3 FOOTING - PLAN VIEW
SCALE: 3/32" = 1'-0"

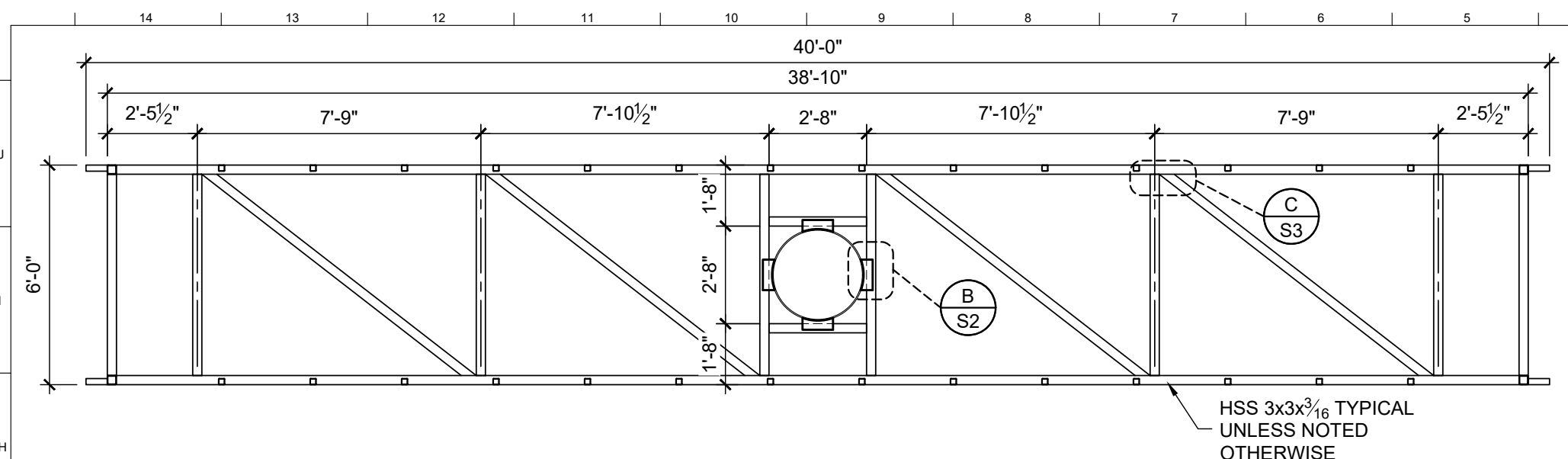
- ### GENERAL STRUCTURAL NOTES
- DESIGN CRITERIA**
- BUILDING CODE: IBC 2015
 - DEAD LOAD: SIGN CABINETS <= 15 PSF FRONT ELEVATION AREA
 - WIND LOAD: $V_{ULT} = 110$ MPH (3 SECOND GUST), RISK CATEGORY II, EXPOSURE C
- STRUCTURAL STEEL**
- PIPE (P): ASTM A500 GRADE B OR API 5L - GRADE X42, $F_y = 42$ KSI
 - STEEL TUBE (HSS): ASTM A500 GRADE B, $F_y = 46$ KSI
 - STEEL PLATE (PL) & ROD: ASTM A36
 - BOLTS: ASTM F3125 GRADE A325N (WITH HARDENED WASHERS)
 - REINFORCING STEEL: ASTM 615 GRADE 60
- WELDING**
- WELDING SHALL BE BY WELDERS HOLDING VALID CERTIFICATES AND HAVING CURRENT EXPERIENCE IN THE TYPE OF WELD SHOWN ON THE DRAWINGS OR NOTES.
- E70XX ELECTRODES FOR SMAW PROCESS
 - ER70S-X, E70C-XC ELECTRODES FOR GMAW PROCESSES
 - E7XT-X OR E7XT-XM ELECTRODES FOR FCAW PROCESSES
 - 3/16" MIN FILLET WELD UNLESS OTHERWISE NOTED
- FOOTING NOTES**
- CONCRETE COMPRESSIVE STRENGTH, $f'_c = 2500$ PSI AT 28 DAYS MIN. NO SPECIAL INSPECTION REQUIRED.
 - CONCRETE PLACEMENT AND QUALITY SHALL BE PER RECOMMENDATIONS IN ACI 614, ACI 301 AND ACI 318. MECHANICALLY VIBRATE ALL CONCRETE WHEN PLACED, REMOVE ALL DEBRIS FROM FORMS BEFORE PLACING CONCRETE.
 - CONCRETE POURED AGAINST UNDISTURBED NATIVE SOILS
 - ALLOWABLE BEARING AT GRADE= 1500 PSI

Drawn by: CARL METERS
Checked by: BJ
SHREE'S TRUCK STOP
410 GLADMAR ROAD
THORP, WA
Engineer: BEN JONES, PE
Account Exec: DAN RISK
Designer: ALSAGER
Date: 4/15/2020
Project No. **OPY-31076**

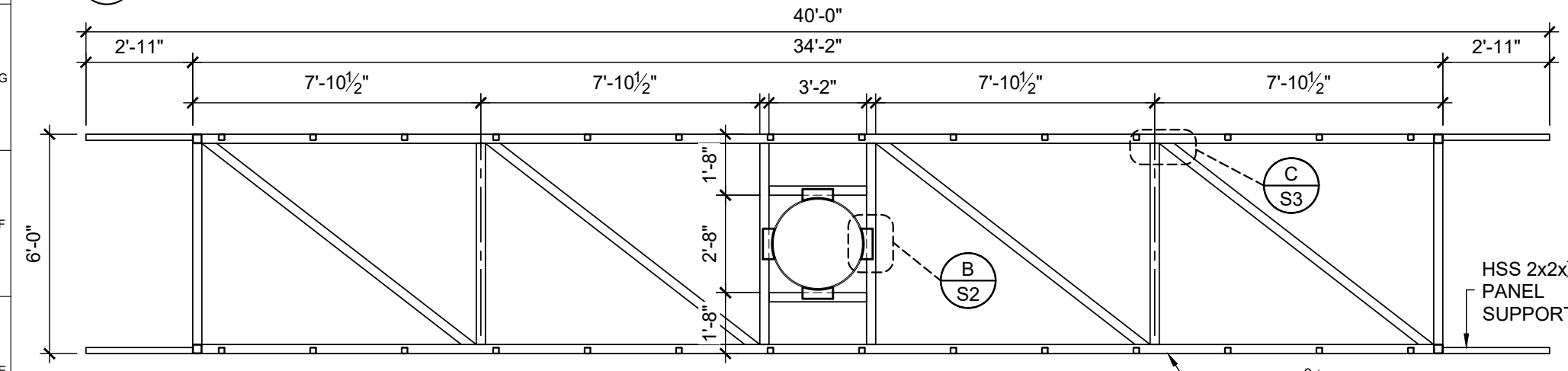


© 2020 YESCO LLC. All rights reserved.
Revisions
No. Date
1 4/15/2020
2
3
4
5
6
7
8
9
10
11
12
13
14
15
16
17
ENGINEERING
1605 South Gramercy Rd.
Salt Lake City, UT 84104
(801) 487-8481
www.yesco.com
YESCO

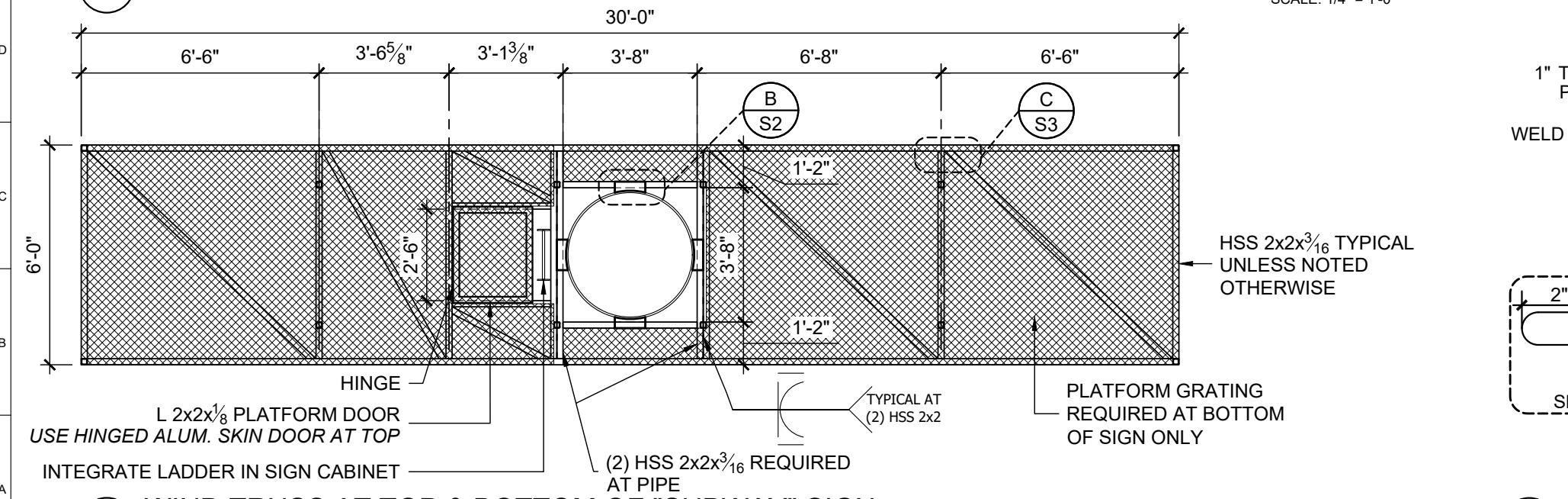
S1



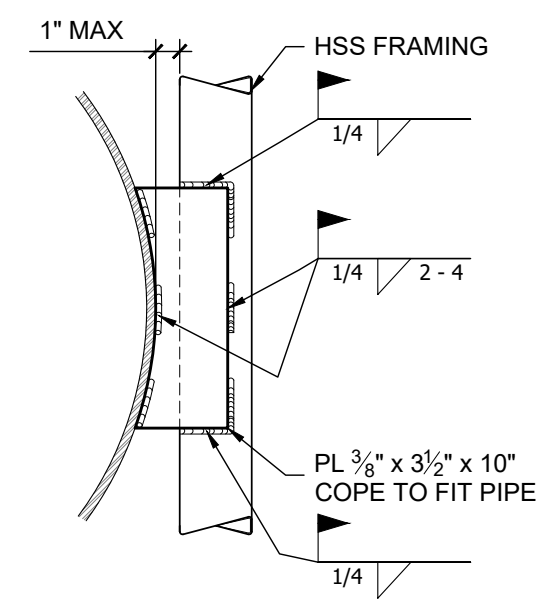
6 WIND TRUSS AT TOP OF "SHREE'S" SIGN
SCALE: 1/4" = 1'-0"



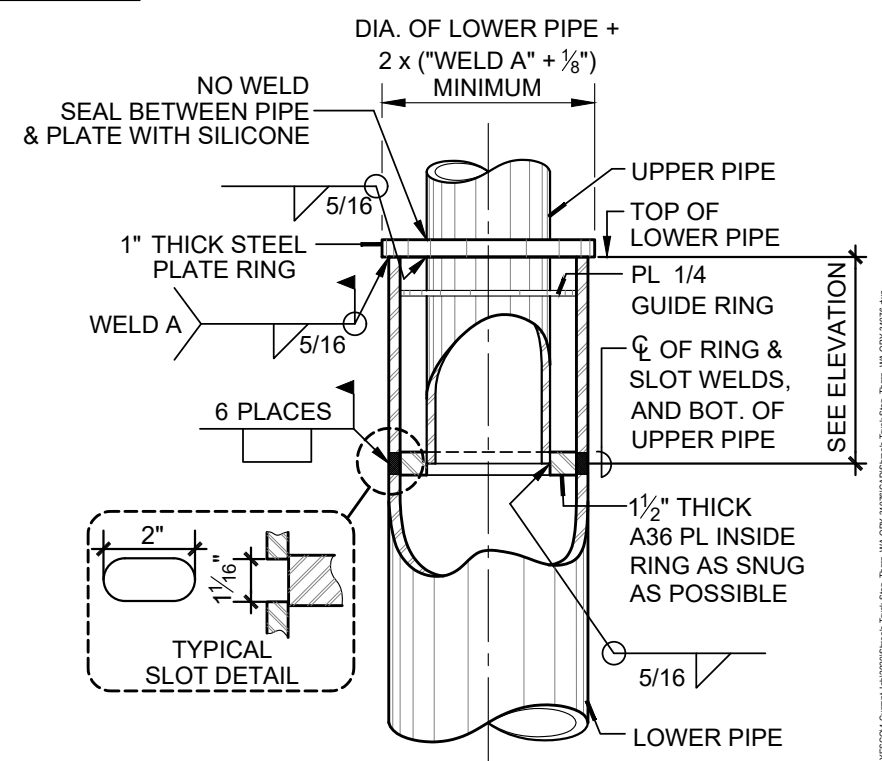
5 WIND TRUSS AT BOTTOM OF "SHREE'S" SIGN
SCALE: 1/4" = 1'-0"



4 WIND TRUSS AT TOP & BOTTOM OF "SUBWAY" SIGN
SCALE: 1/4" = 1'-0"



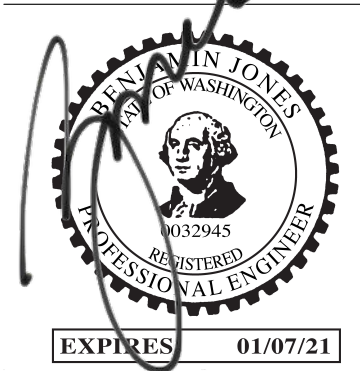
B TYPICAL AT (4) LOCATIONS TOP AND BOTTOM OF EACH SIGN CABINET
SIGN FRAME AT COLUMN
SCALE: 1-1/2" = 1'-0"



A SLEEVE JOINT COLUMN SPLICE
NO SCALE

Revisions

No.	Date
Orig.	4/15/2020
△	
△	
△	
△	
△	

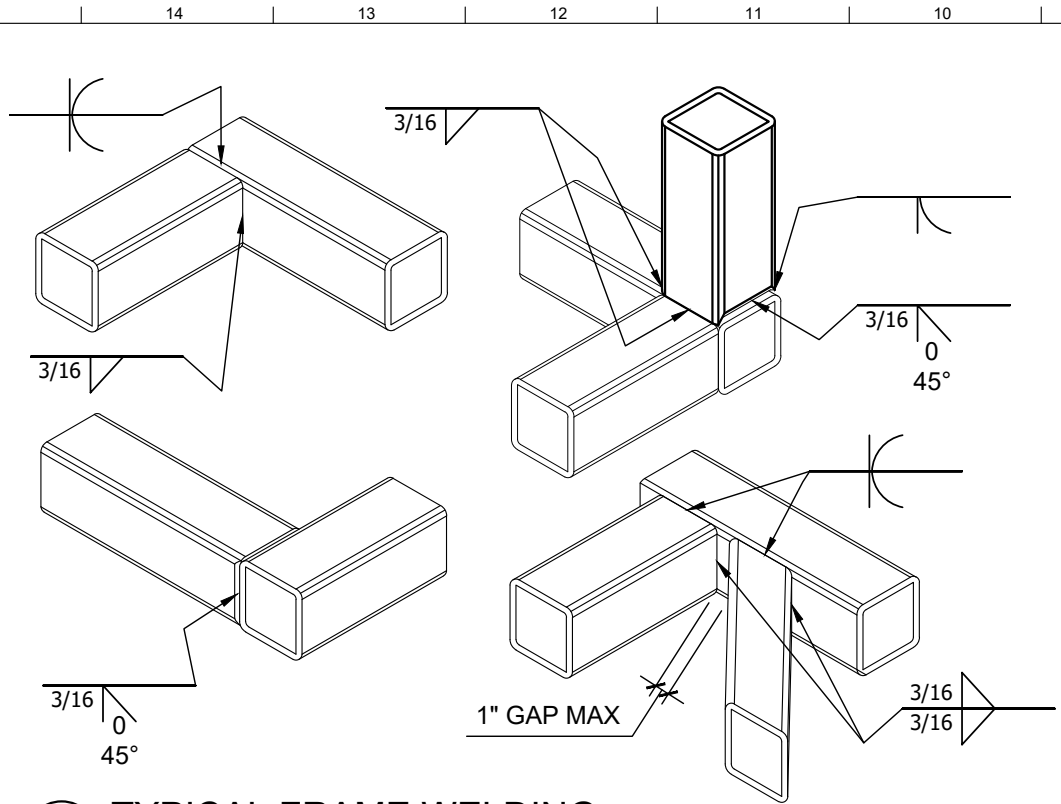


Drawn by.....CARL MEYERS
Checked by.....BJ

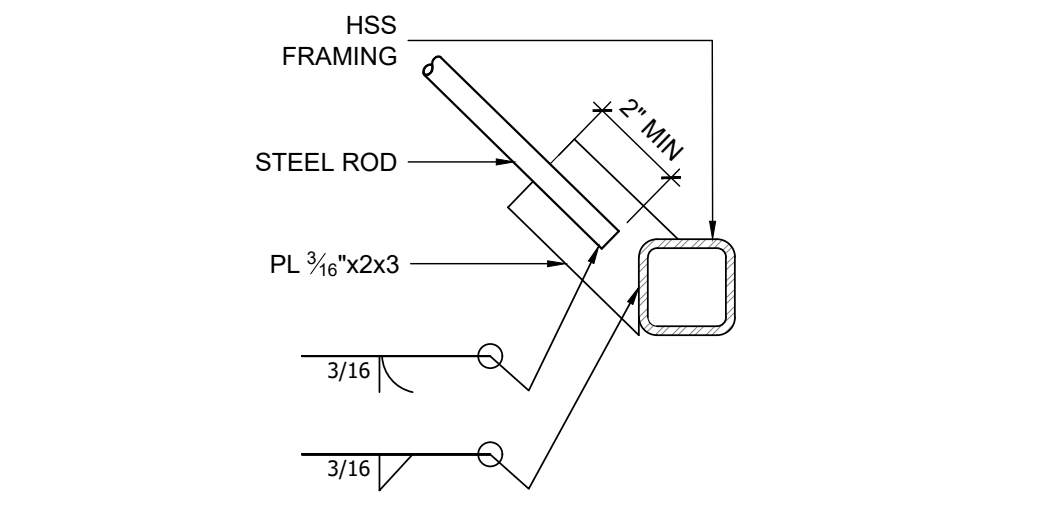
SHREE'S TRUCK STOP
410 GLADMAR ROAD
THORP, WA
Engineer.....BEN JONES, PE
Account Exec.....DAN RISK
Designer.....ALSAGER
Date: 4/15/2020

Project No.
OPY-31076

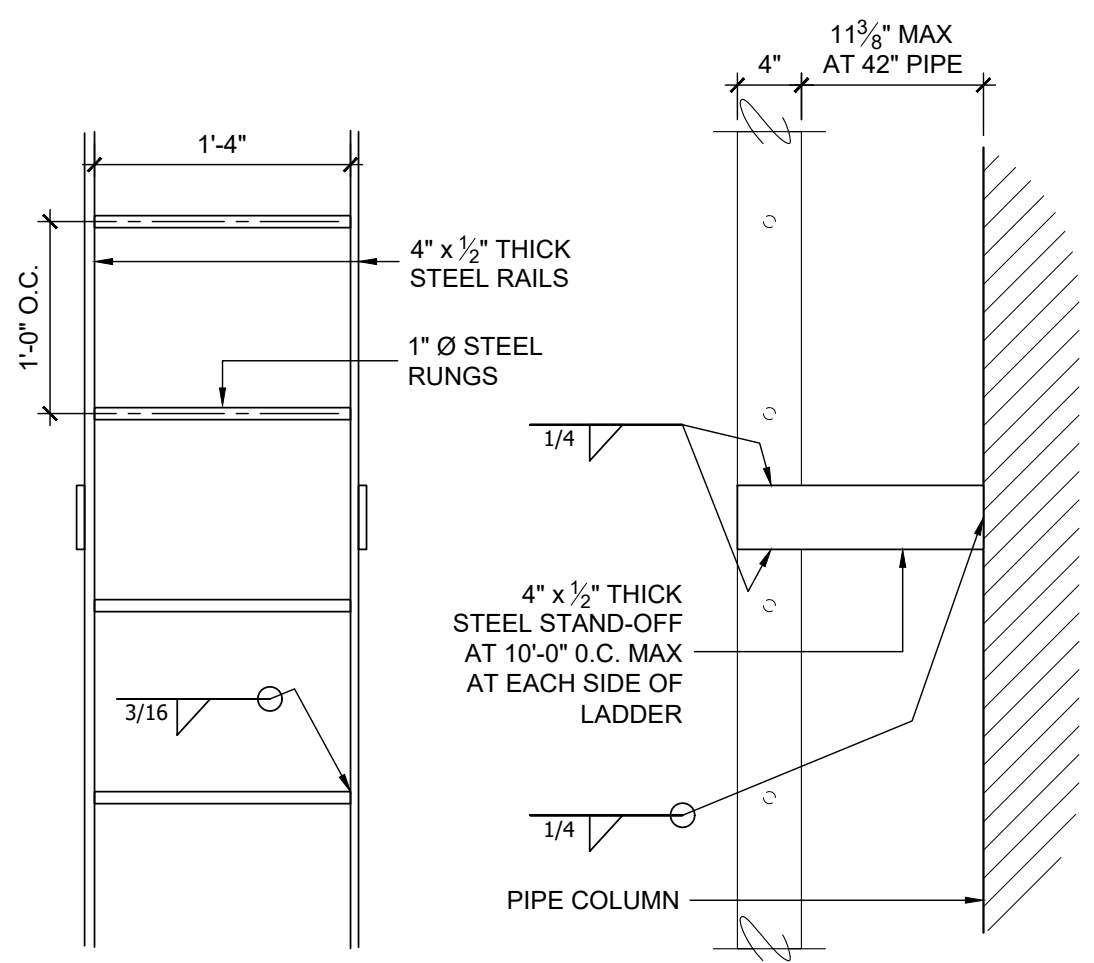
S2



C TYPICAL FRAME WELDING
SCALE: 3" = 1'-0"



D STEEL ROD AT HSS FRAME
NO SCALE



PROVIDE OSHA RATED FALL ARREST CLIMBING SYSTEM T.B.D.
E FIXED STEEL LADDER DETAILS
SCALE: 1" = 1'-0"



ENGINEERING

1605 South Gramercy Rd.
Salt Lake City, UT 84104
(801) 487-8481

www.yesco.com

© 2020 YESCO LLC, All rights reserved

Revisions

No.	Date
Orig	4/15/2020
△	
△	
△	
△	
△	
△	
△	
△	



Drawn by..... CARL MEYERS
Checked by..... B.J.

SHREE'S TRUCK STOP
410 GLADMAR ROAD
THORP, WA

Engineer..... BEN JONES, PE
Account Exec..... DAN RISK
Designer..... ALSAGER

Date: 4/15/2020

Project No.
OPY-31076

C:\Users\meypm\Documents\YESCO\Current\482020\Shree's Truck Stop\Thorp, WA\OPY-31076\Shree's Truck Stop_Thorp, WA\OPY-31076.dwg



ENGINEERING

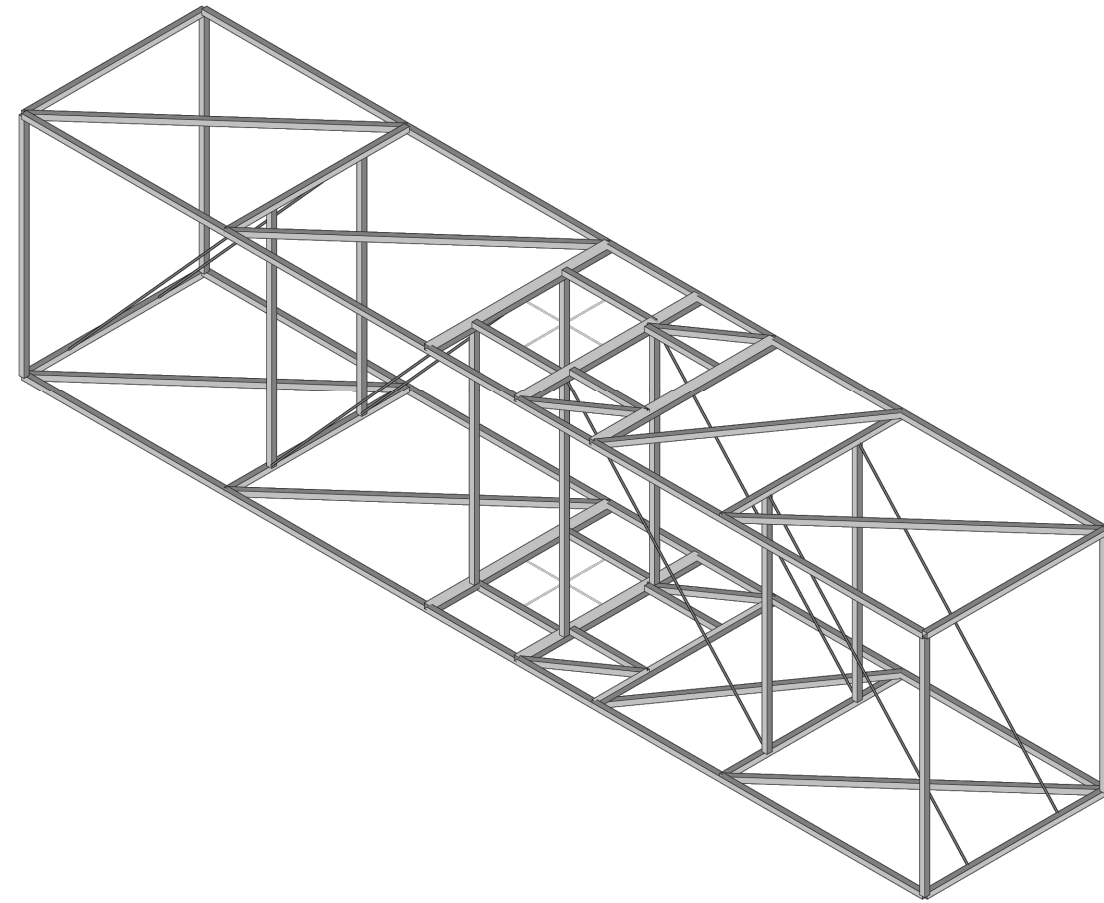
1605 South Gramercy Rd.
Salt Lake City, UT 84104
(801) 487-8481

www.yesco.com

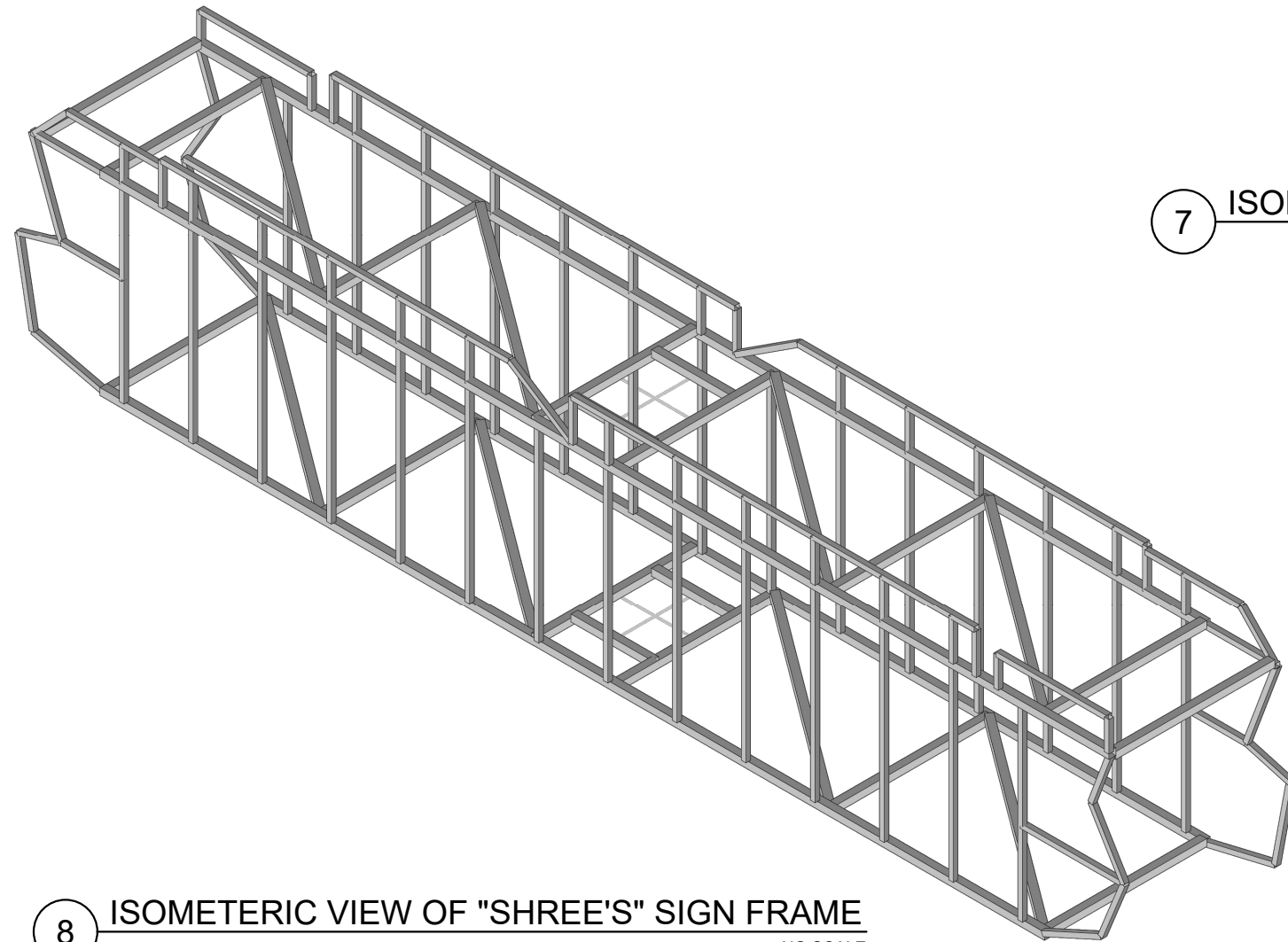
© 2020 YESCO LLC, All rights reserved

Revisions

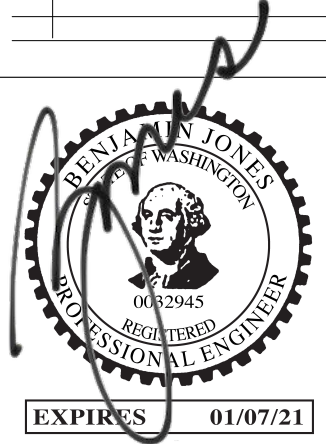
No.	Date
Orig	4/15/2020
△	
△	
△	
△	



7 ISOMETERIC VIEW OF "SUBWAY" SIGN FRAME
NO SCALE



8 ISOMETERIC VIEW OF "SHREE'S" SIGN FRAME
NO SCALE



Drawn by..... CARL MEYERS

Checked by..... BJ

SHREE'S TRUCK STOP
410 GLADMAR ROAD
THORP, WA

Engineer..... BEN JONES, PE
Account Exec..... DAN RISK
Designer..... ALSAGER

Date: 4/15/2020

Project No.

OPY-31076

S4